

This drawing, as an instrument of service, is provided by and is the property of Graziani + Corazza Architects Inc. The contractor must verify and accept responsibility for all dimensions and conditions on site and must notify Graziani + Corazza Architects Inc. of any variations from the supplied information. Graziani + Corazza Architects Inc. is not responsible for the accuracy of survey, structural, mechanical, electrical, etc., engineering information shown on this drawing. Refer to the appropriate engineering drawings before proceeding with the work. Construction must conform to all applicable codes and requirements of the authorities having jurisdiction. Unless otherwise noted, no investigation has been undertaken or reported on by this office in regards to the environmental condition of this site. This drawing is not to be used for construction purposes until countersigned by the Architect.

This drawing is not to be scaled. All architectural symbols indicated on this drawing are graphic representations only.



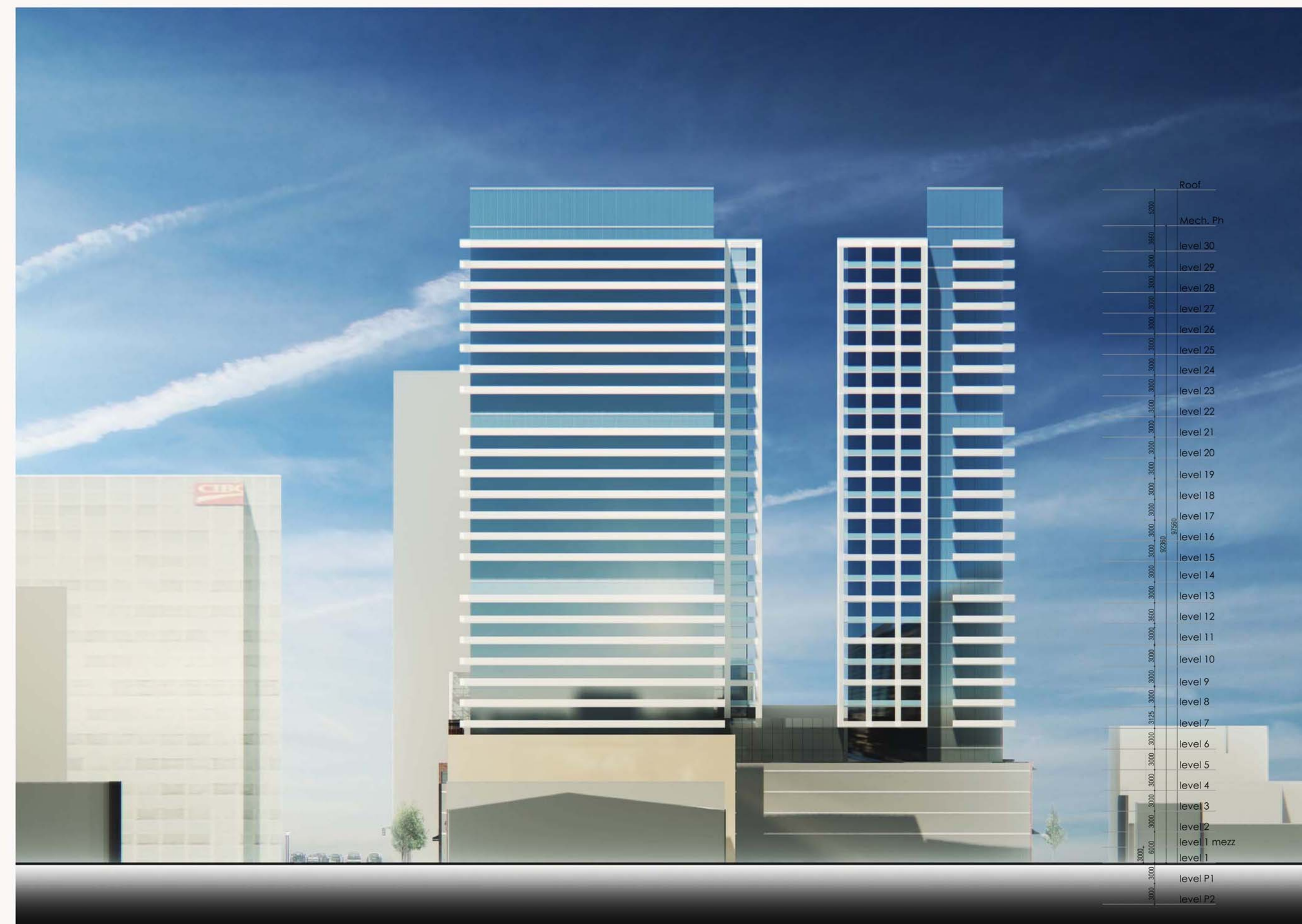
SOUTH COLOURED ELEVATION



WEST COLOURED ELEVATION

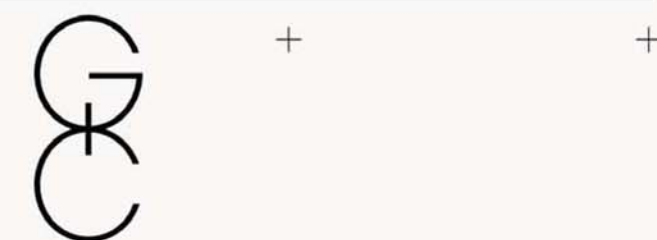


NORTH COLOURED ELEVATION



EAST COLOURED ELEVATION

issued for revisions



**GRAZIANI
+
CORAZZA
ARCHITECTS INC.**

1320 Shawson Drive, Suite 100, Mississauga, Ontario, L4W 1C3
Phone: 905.795.2601 Fax: 905.795.2844 www.gc-architects.com

RESIDENTIAL DEVELOPMENT

43 King Street

Hamilton ONTARIO

Project Architect: **B.GRAZIANI**

Assistant Designer: **R.LINCOLN**

Drawn By: **R.LINCOLN**

Checked By: **D.BIASE**

Plot Date: **Nov. 01, 2017**

Job #: **1388.16**

VIEWS